

# Christine®

HEADWEAR

**Style 8247-251, Draped hat**

Cotton, Knitwear

Brown melange

Danish design

the autumn

# Citylight

Autumn/Winter 2011-12

CE Only the best is good enough and this is why all Christine products are CE marked.  
This is your guarantee that the products are appropriate and safe for the end-user.



**Style 8200-184, Basic Long**

Cotton/silk  
Basic Short (8202-184)



184



185



**Style 8250-257, Basic Easy**

Cotton  
Basic Long (8200-257)  
Basic Short (8202-257)



257

**Style 8250-256, Basic Easy**

Silk/cotton  
Basic Long (8200-256)  
Basic Short (8202-256)



256



# Brighten up the winter dark

Light, bright and warm fabrics. This winter's collection is inspired by the beautiful shades of nature. The gentle, Scandinavian colours and the soft fabrics harmonize beautifully and support our ambition to use only the very best natural materials. Our designs are inspired by the diversity of nature.

The colours are soft and easily match your existing wardrobe. They are feminine, beautiful and give your face a glow.

We know how essential it is for your skin to breathe. This is why you find only the softest silk, the finest cotton, and the most delicate wool in our collection and why all our designs are lined to ensure that nothing irritates your sensitive skin and to emphasize your feeling of wellbeing.

We only use the very best materials because we wish to ensure your wellbeing, in a stylish Danish design.



**Style 8200-195, Basic Long**

Cotton  
Basic Short (8202-195)



195

the autumn  
**Citylight**



**Style 8250-260, Basic Easy**

Denim  
Basic Long (8200-260)  
Basic Short (8202-260)



260



**Style 8200-193, Basic Long**

Silk/cotton  
Basic Short (8202-193)



193



**Style 8202-186, Basic Short**  
Cotton/silk  
Basic Long (8200-186)



186

6

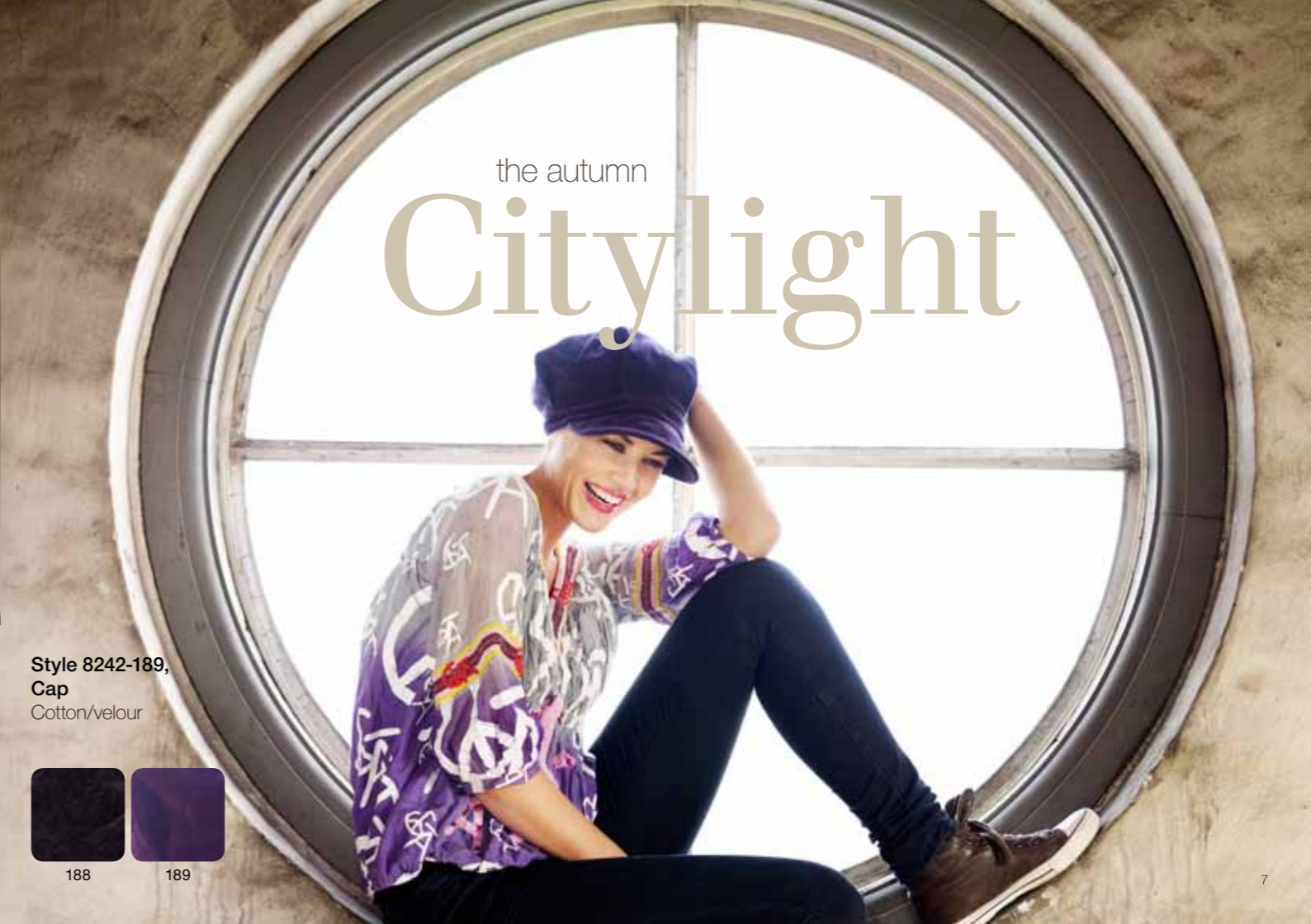


**Style 8200-192, Basic Long**  
Silk/cotton  
Basic Short (8202-192)



192

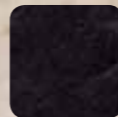
7



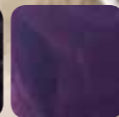
the autumn

# Citylight

**Style 8242-189, Cap**  
Cotton/velour



188



189

7



**Style 8251-260, Hat with pleads and a long ribbon**  
Denim



260



**Style 8252-250, Cap**  
Cotton/Knitwear



209

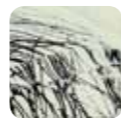
250

251

252



**Style 8200-263, Basic Long**  
Cotton/silk  
Basic Short (8202-263)  
Basic Easy (8250-263)



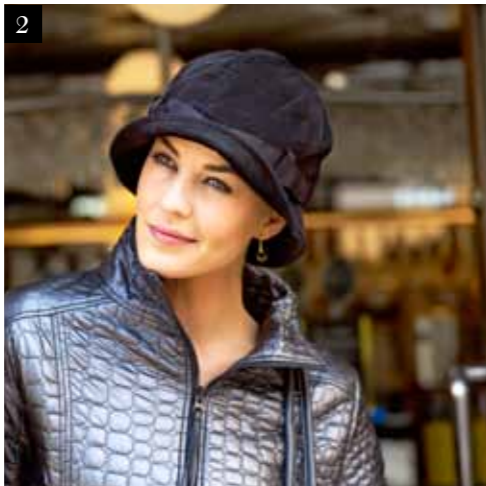
263



**Style 8200-258, Basic Long**  
Cotton/silk  
Basic Short (8202-258)  
Basic Easy (8250-258)



258



**1** Style 8202-185, Basic Short  
Cotton/silk  
Basic (8200-185)



184 185

**2** Style 8243-188, Hat  
Cotton/velour



188 189

**3** Style 8200-182, Basic Long  
Cotton/wool/silk  
Basic Short (8202-182)



182 183

**4** Style 8202-197, Basic Short  
Cotton



197

# Scarves

in soft materials

There is a scarf for every style. Choose from the many soft qualities, beautiful colors and unique designs. There are three basic models:

## Basic Long

This scarf has long ribbons to adjust the size of the scarf and to create volume and effect. The headscarf can be tied in many different ways to achieve the desired look. Style code 8200-XXX.

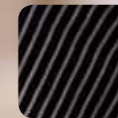
## Basic Short

The Basic Short style with short ribbons is tied in the back where there is a little loop through which you put one of the ribbons to make sure that the scarf stays in place. The scarf is easy to take on and creates the right volume at the back of your head. The scarf can be tied, before you put it on, which is an advantage if you have difficulty lifting your arms after breast surgery. Style code 8202-XXX.

## Basic Easy

This model also has long ribbons tied around the crown, so that the scarf is draped and fixed – ready to take on. Basic Easy is for women who want volume from the long ribbons, but who either cannot tie the scarf or prefer not having to tie it. The scarf – or rather crown – can also be used as a hat, "ready-to-go". Style code 8250-XXX.

**Style 8202-259, Basic Short**  
Cotton  
Basic Long (8200-259)  
Basic Easy ( 8250-259)



259





**Style 8249-207, Short scarf, pleated**  
Cotton, knit



**Style 8247-209, Draped hat**  
Cotton, knit

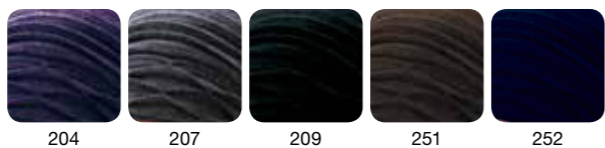
# Knitwear

for the cold season

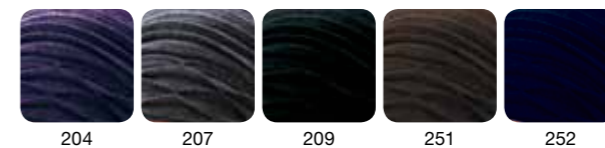
When it is biting cold we all want to keep ourselves warm in light and breathable knitwear. Our stylish knitwear collection has a unique design which ensures both our scarves and knitted hats stay in place at all times. They are made of the softest, finest cotton, making them very light and comfortable to wear indoors and outdoors.



**Style 8248-252, Scarf with asymmetric ribbons**  
Cotton, knit



204 207 209 251 252



204 207 209 251 252



**Style 8200-194, Basic Long**

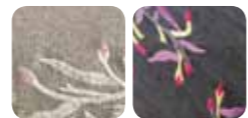
Silk/cotton  
Basic Short (8202-194)



194

**Style 8202-183, Basic Short**

Cotton/wool/silk  
Basic Long (8200-183)



182

183

**Style 8200-187, Basic Long**

Cotton/wool/silk  
Basic Short (8202-187)



187

**Style 8200-196, Basic Long**

Cotton  
Basic Short (8202-196)



196

Wellness with  
**bamboo**

**Style 8202-199, Basic Short**  
Bamboo viscose



**Style 8200-174, Basic Long**  
Bamboo viscose



**Style 8254-265, Zen**  
Bamboo viscose



**Style 8240-254, Yoga**  
Bamboo viscose



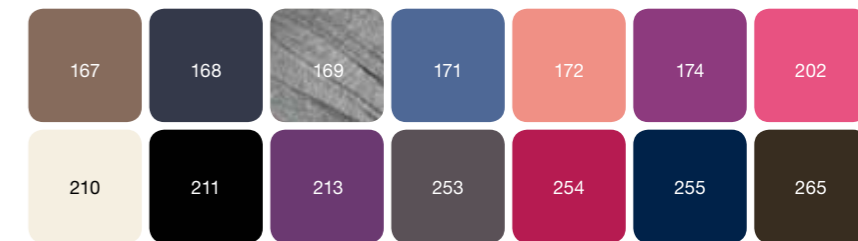
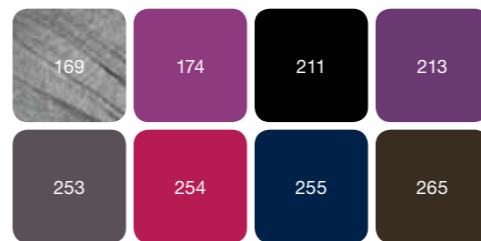
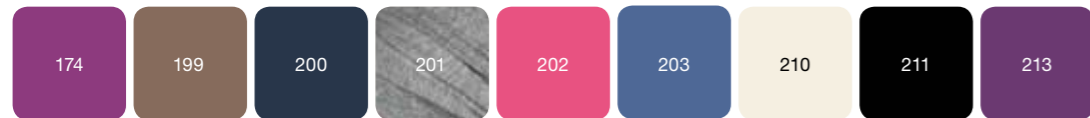
**Style 8241-253, Gaia**  
Bambooviscose



**Scarves**

**Turbans**

Our lovely wellness line in bamboo consists of two scarves and three turbans. The turbans are ideal for sporting purposes as they stay in place. Furthermore the material is sweat-absorbing so that it keeps the head warm even though the head is damp. Whichever type you choose you will get a head cover that is easy to put on and extremely comfortable to wear. The wellness line is in bamboo viscose.



**Style 8253-266, Milky Way**

Milk fibres/cotton

266



## A green novelty

from Christine

Milky Way from Christine is a nightcap made of milk fibres which is a natural material with special qualities. It is breathable, sweat absorbing and keeps you warm – just like wool. Milk fibres are therefore a natural choice for our nightcap in more than one sense – the cap will keep your head warm during night and at the same time it will feel soft and comfortable to wear - almost like a second skin. The production of milk fibres is known to have no impact on the environment, so milk fibres truly are a green product.



## Wigliner

The Christine Wigliner is a quite unique product made of bamboo viscose. It's a small hat to be worn hidden under a wig and it has the superb features that it cools the skin when it's warm and keeps the skin warm when it's cold outside. Furthermore it has a perfect fit. The Wigliner is amazingly soft and silk-like to wear – and is of course without any irritating seams. Another advantage is that it can be used under the Christine scarves for further volume and protection.

**Style 8246-248, Wigliner**

Bamboo viscose

248

249



Christine®

HEADWEAR

Retailer

Ear rings borrowed from needs.dk